

SmartLF Gx+ 42

INNOVATION IN WIDE FORMAT SCANNERS AND SOFTWARE



Wide Format Scanners for High Speed
Technical Imaging & Hi-Fidelity Color
Reproduction

SUITABLE FOR:
SCANNING & REPROGRAPHICS SERVICE
PROFESSIONALS, AEC, CAD, MAPPING & GIS,
ELECTRONIC DOCUMENT CAPTURE (ISIS)

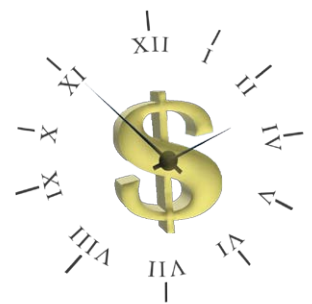
WASTE NO TIME with Colortrac's SmartLF Gx+ 42 wide format, high volume production scanners.

Our **fastest ever** scanners with full high definition (HD) 1200x1200dpi optical resolution, the SmartLF Gx+ 42 captures crisp, sharp fine line details found in technical documents and maps combined with the accurate color imaging of artwork, photographs and graphics originals. The innovative LED lighting system provides instant-on high productivity from the moment you power on, with no warm up required and no waiting.

These scanners provide the ultimate in wide format scanning and copying productivity coupled with superior color reproduction.



TIME IS MONEY



Key Features

HIGH VOLUME PRODUCTION SCANNERS

- ◆ Our FASTEST most PRODUCTIVE scanner – 4ips color and 12ips monochrome @200dpi
- ◆ 1200dpi High Definition (HD) optical resolution
- ◆ 42in image width – perfect for scanning oversize AO/E-size documents
- ◆ **NEW** Magnetic document guide for easier, reliable and skew free loading in high volume operation
- ◆ **NEW** Includes SmartWorks EZ SCAN/COPY/EMAIL software
- ◆ High density 48-bit color graphics and 16-bit monochrome data capture for accurate color and excellent monochrome images
- ◆ Reliable media feed system with advanced 2+4 all-wheel drive
- ◆ Versatile media handling up to 0.08in (2mm) suitable for most media types. "T" model option for scanning mounted documents up to 0.8in (20mm)
- ◆ On-site upgrade from monochrome to color and express color - via Email
- ◆ CCD¹ sensor technology with unique, bi-directional LED² lighting system for maintenance free, low cost operation from power-on, no warm-up, no waiting
- ◆ ENERGY STAR® Qualified
- ◆ Plug and play USB2 or Gigabit Ethernet connection to your network
- ◆ Optional document return guide

Colortrac's 6th generation SmartLF Gx+ 42 ENERGY STAR® qualified scanners combine a unique Colortrac designed bi-directional LED light system, with superior color imaging attributes of CCD technology.

LED has low energy requirements, a longer life and reduced environmental impact compared to traditional fluorescent tube lighting systems.

These uniquely versatile scanners capture the sharply defined line detail in technical documents and maps required for AEC, CAD and GIS combined with the highly accurate color reproduction and copying required for graphics and photographic documents – at a price you can afford.



CAD and Technical Drawings



Image Enhancement

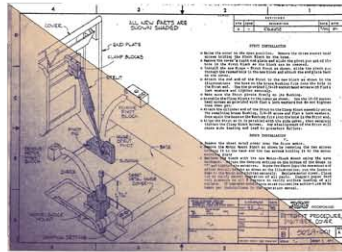


Image Restoration



Graphic Art & Photographs

All SmartLF scanners are available in three affordable specification levels; monochrome, color and express color, (m, c, e). m and c models can be easily upgraded via unique Email process if requirements change.

Because you need large format scanning solutions that work for you:

SmartLF Gx+ 42 scanners include SmartWorks EZ SCAN/COPY/EMAIL software that combines wide format scanning and copying in one very easy to use program and has full compatibility with wide format printers through standard Windows drivers.

SmartWorks EZ is optimized for use with touchscreen monitors using a simple, intuitive user interface suitable for general office use.



SmartWorks EZ software - Everything you need is IN THE BOX!

Colortrac recommends:

SmartWorks Pro SCAN & COPY software for more demanding users.

The professional option with Colortrac's 'scan once' workflow for unrivalled control & productivity.

Includes Intelligent Adaptive Thresholding (IAT) - voted "Best in Class" and receiving 4.5 Star OUTSTANDING rating by BERTL.

Specifications

	Gx+ 42m/Gx+ T42m Mono/Grayscale	Gx+ 42c/Gx+ T42c +Color	Gx+ 42e/Gx+ T42e +Express Color
Upgradeable	m → c m → e	c → e	N/A
Optical Resolution	1200dpi	1200dpi	1200dpi
Interpolated Resolution	9600dpi	9600dpi	9600dpi
Max Scan Width	42in (106.7cm)	42in (106.7cm)	42in (106.7cm)
Max Media Width	46in (116.8cm)	46in (116.8cm)	46in (116.8cm)
Max Media Thickness	0.08in (2mm)/0.8in (20mm)	0.08in (2mm)/0.8in (20mm)	0.08in (2mm)/0.8in (20mm)
Imaging Technology	6 x CCD	6 x CCD	6 x CCD
Accuracy	+/-0.1% +/-1 pixel	+/-0.1% +/-1 pixel	+/-0.1% +/-1 pixel
Data Capture (color/grayscale)	16-bit	48-bit/16-bit	48-bit/16-bit
Color Space	N/A	RAW RGB/sRGB	RAW RGB/sRGB
Scan Speed 1-bit mono (in/sec) @200dpi	12.00	12.00	12.00
Scan Speed 8-bit grayscale (in/sec) @200dpi	12.00	12.00	12.00
Scan speed 24-bit color (in/sec) @200dpi	N/A	2.00	4.00
Paper Path	Face-down, Front entry, Rear exit		
Interface	High Speed USB 2.0/Gigabit Ethernet network-ready		
Power Requirements	External power supply 100-250 VAC autosensing +/-10%, 50-60Hz Scanner power consumption: 72Wh (scanning) 4.5Wh (standby)		
Weight & Dimensions (WxHxD)	97lbs (44 kg) 56.7in x 7in x 14.6in (114 x 18 x 37cm)		
Host Platform	Windows XP, Windows Vista, Windows 7, 32-bit and 64-bit architectures		
Certifications	CB, CE, FCC, UL, RoHS, ENERGY STAR [®]		
Included Software	SmartWorks EZ SCAN/COPY/EMAIL software – supports TIFF, JPEG, PNG & PDF; WIA/STI interface		
Optional Software	SmartWorks Pro SCAN, COPIER or SCAN & COPY software – industry leading, professional scanning and color-copying software		
Accessories	Floor stand, Paper catch basket, Document return guide, Universal Repro Stand, PC and monitor mounting kit (floor stand required)		

¹CCD (Charged coupled device). ²Unlike fluorescent tubes, LEDs only come on when scanning and have an estimated working-life of 50,000 hours or 6 years scanning 24/7.

[For full details of host system requirements please go to: http://www.colortrac.com/support/system_requirements.htm.] Colortrac Ltd makes no warranty of any kind with respect to the information contained in this document and reserves the right to change specifications without notice. Colortrac and Smart LF[®] are trademarks of Colortrac Ltd. All other trademarks are the property of their respective owners. Copyright © 2011 Colortrac Ltd. COLORTRAC SMARTLF WIDE FORMAT SCANNERS ARE DESIGNED AND MANUFACTURED BY COLORTRAC.

VERSION: 110310

Distributed By:



3010 Red Hill Avenue, Costa Mesa, CA 92626
 888.221.7226 | www.SCANTopia.com

Colortrac Limited

Colortrac HQ and Factory
 3-5 Brunel Court, Burrell Road,
 St Ives, Cambs PE27 3LW, UK
 Tel: +44 1480 464618
 Fax: +44 1480 464620

Colortrac Inc.

4431-A Brookfield Corporate Drive
 Chantilly, Virginia 20151, USA
 Tel: +1 703 717 5631
 Fax: +1 703 717 5361

Colortrac Japan

12th floor, 1203
 Yokohama Creation Square,
 5-1 Sakae-Cho
 Kanagawa-Ku, Yokohama-Shi
 Kanagawa-Ken
 221-0052 Japan
 Tel: +81(0)45 548 6991
 Fax: +81(0)45 548 6992

Colortrac Limited (Beijing)

Room 1208, ZhongGuanCun Technology Development
 Building C, No.34 Zhong Guan Cun South Street
 HaiDian District, Beijing 100081, P.R. China
 Tel: +86 (0) 10 62124936
 Fax: +86 (0) 10 62124770

www.colortrac.com